

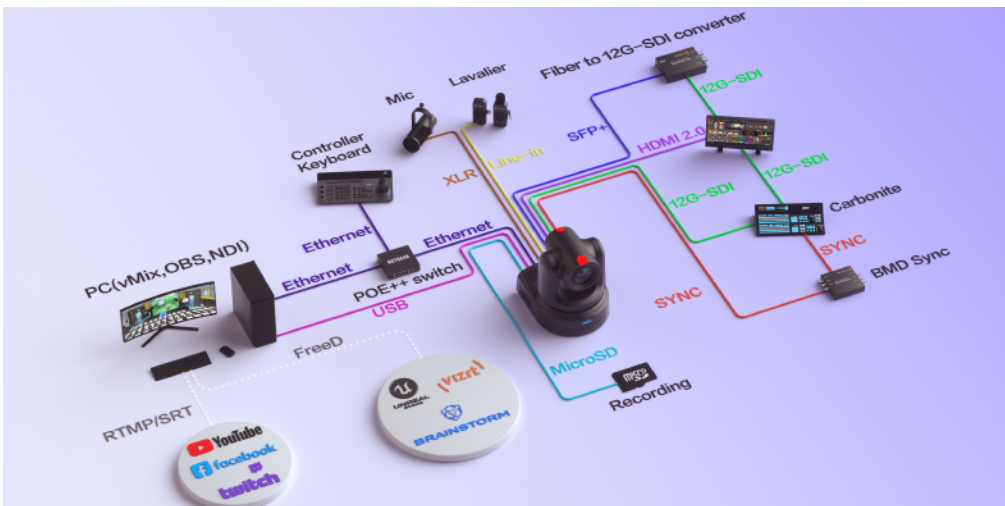


## EXPLORE 1-Inch Sensor PTZ Camera for Broadcasters

Broadcast Level PTZ Camera Disrupts AV Industry

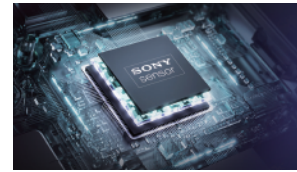
20X | 4K | AUTO-TRACKING  
FREED | GENLOCK | PDAF

SFP+/12G-SDI/HDMI/NDI®/NDI®HX3/XLR



### High-Performance Sensor and Image Processor

Explore's Sony 1-inch CMOS sensor delivers broadcast-grade imaging. Engineered for low-light excellence, it captures vivid detail with minimal noise while achieving cinematic depth of field. Enhanced light sensitivity ensures razor-sharp subject focus with artful background blur - the ultimate choice for professional production.



### PDAF (Phase Detection Auto Focus)

Experience seamless and precise focusing with our PTZ camera's advanced AI Auto Focus. Whether for live events or VR production, Telycam's PDAF auto-focus empowers you with fast and accurate focus for premium-quality footage.



### Versatile Output Options with Robust Audio Capabilities

The Explore offers diverse output options including 4K60p through NDI®, NDI®HX3, 12G-SDI, HDMI, and SFP+, along with 3.5mm line-in and Mini XLR with Phantom power for compatibility with various microphones and audio equipment, ensuring great flexibility and compatibility for Telycam users.



### Genlock Functionality

The Explore features Genlock for better synchronization. This allows it to function as the main camera, ensuring precise video synchronization with sub-cameras in broadcasting and live streaming setups.



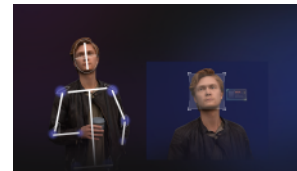
### Built-in ND Filters for Light Management

Explore features a built-in variable ND filter adjustable to 1.6%, 6.3%, 25%, and 100%, with the option to attach custom ND filters for precise lighting control.



### Native AI-Based Auto-Tracking

The Explore features AI-based auto-tracking, automatically following subjects to enhance ease of use and capture the moments flawlessly.



### FreeD Technology Integration

The Explore integrates FreeD technology for versatile shooting angles, ideal for both real-world and virtual applications.



### MicroSD Card Slots

The Explore features two MicroSD card slots – one for firmware upgrades and the other for local recording. Record directly onto the camera for instant backup during network issues or quick access, ideal for prompt event review.



## Specifications

Camera	Explore
Part Number	TLC-900-IP-20-4K(NDI)-AB
Sensor	1 inch, 9MP UHD CMOS sensor
Zoom	20X optical zoom
Lens	f=9.79~186.5mm, F2.8~F4.5
Horizontal View Angle	71°(Wide)~4.05°(Tele)
Vertical Viewing Angle	39.6°~2.2°
Diagonal Viewing Angle	78.5°~4.6°
Minimum Working Distance	Wide: 15cm; Tele: 150cm
S/N Ratio	≥50dB
Video Format	12G-SDI: 3840*2160P60/50/30/25/59.94/29.97/24/23.98; 1920*1080P60/50/30/25/59.94/29.97/24/23.98; 1920*1080I60/50/59.94; 1280*720P60/50/30/25/59.94/29.97
	3G-SDI: 1920*1080P60/59.94/50/30/29.97/25/24/23.98; 1920*1080I60/59.94/50; 1280*720P60/59.94/50/30/29.97/25
	HDMI2.0: 3840*2160P60/50/30/25/59.94/29.97/24/23.98; 1920*1080P60/50/30/25/59.94/29.97/24/23.98; 1920*1080I60/50/59.94; 1280*720P60/50/30/25/59.94/29.97
	NDI® / NDI®HX3: Main Stream: 3840*2160P15~60; 1920*1080P15~60; 1280*720P15~60; 1024*576P15~60; Sub Stream: 640*360P15~30
	SFP+: 3840*2160P60/50/30/25/59.94/29.97/24/23.98; 1920*1080P60/50/30/25/59.94/29.97/24/23.98; 1920*1080I60/50/59.94; 1280*720P60/50/30/25/59.94/29.97
USB Type-C:	NV12: 1920*1080P5; 1280*720P15; 1024*576P25; 800*448P30 YUYV: 1920*1080P5; 1280*720P15; 1024*576P25; 800*448P30 MJPG: 3840*2160P30; 1920*1080P60; 1280*720P60; 1024*576P60; 800*448P60 H264/H265: 3840*2160P30; 1920*1080P60; 1280*720P60; 1024*576P60; 800*448P60

## Image Parameters

Noise Reduction	2D&3D
Minimum lux	0.5 lux(50 IRE Max AGC, 1/30, F2.8)
White Balance	Auto/Manual/ATW/Push/Indoor/Outdoor/Color Temperature
Exposure	Auto/Manual/Shutter Priority/Iris Priority/Brightness Priority
Anti-Flicker	OFF, 50Hz, 60Hz
Image Flip/Mirroring	Supported
Focus/Iris/Electronic-shutter	Auto/Manual
Gamma	Supported
Backlight Compensation	Supported

## IP Streaming

Video Encoding	H.264/H.265
Bitrate Control	Variable bitrate(VBR), Constant bitrate(CBR)
Bitrate Range	1024Kbps~122800Kbps
Network Port Speed	1000M
Protocol	NDI®, NDI®HX3, SRT, HTTP, HTTPS, RTSP, RTMP, RTMPS, ONVIF, VISCA over IP(TCP&UDP), VISCA, PELCO P/D, SSDP, FreeD, NTP, RTP Multicast, WebRTC, MPEG-TS

## Pan/Tilt Movement

Preset	Remote controller: 10; Serial port: 256; Accuracy: 0.1°
Pan Rotation Angle	-176°~+176°
Tilt Rotation Angle	-90°~+90°
Pan Rotation Speed	0.1°~80°/s
Tilt Rotation Speed	0.1°~60°/s

## I/O Interface

Control Port	RS232, RS485, RS422, RJ45, USB, NDI®HX3
Video Port	NDI®, NDI®HX3, HDMI 2.0, 12G-SDI, 3G-SDI, SFP+, USB Type-C
Audio Port	Mini XLR(with phantom power), stereo 3.5mm line in
Tally	Supported
POE++	Supported
Daisy Chain	Supported

## General

Input Voltage	DC12V, POE++(IEEE802.3bt)
Operating Temperature	-10°C~50°C
Operating Humidity	≤80%
Dimension (LxWxH)	232.5 mm×264mm×269mm
Net Weight	4.6kg(10.15LBS)
Color	Black/White

